

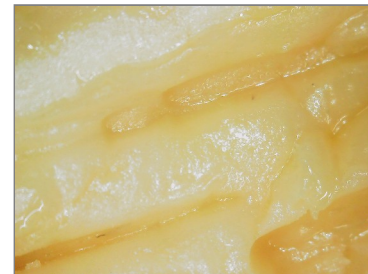


510 N Sheridan Road Suite D | Tulsa, OK 74115 | (918) 520-3441 | OMMA #: LAAA-0095-HXSF

# Report of Analysis

Report Status: Final

**Client Name:** New Heights Captial (Processor) (ZZBT) **Lab ID:** -16908  
**Address:** 8404 NW 159<sup>th</sup> ST **Strain:** Bulk Badder - El Chivo  
 Edmond, OK 73013 **Matrix:** Concentration  
**Phone:** **Sample Batch #:** 003-05670825  
**LICENSE #:** AA-AYEI-ZZBT **Sample Weight:** 10  
**Collected:** **Received:** 12/20/2025  
**Harvest/ Production:** 12/10/25  
**Special Notes:** 1A40E010000006B000001324



## Summary of Results

Potency Profile		Terpene Profile	
Cannabinoid	Weight %	Terpene	Result %
CBDV	ND	α-Pinene	0.0670
CBDA	0.198	Camphene	< LOQ
CBN	0.127	Myrcene	0.0714
CBD	ND	α-Terpinene	< LOQ
CBGA	0.282	β-pinene	0.0828
CBG	0.163	3-Carene	< LOQ
THCV	ND	Ocimene	< LOQ
Δ9-THC	ND	Delta-limonene	0.181
Δ8-THC	ND	p-Cymene	< LOQ
THCA	73.2	Eucalyptol	0.0557
CBC	ND	γ-Terpinene	< LOQ
<b>Total THC Delta-9(%)</b>	ND	Terpinolene	< LOQ
<b>Total THC Delta-9(mg/g)</b>	ND	Linalool	0.170
<b>Total Cannabinoids (%)</b>	78.9	Isopulegol	< LOQ
<b>Total Cannabinoids (mg/g)</b>	789	Geraniol	< LOQ
		β-Caryophyllene	2.18
		Humulene	0.846
		cis-Nerolidol	< LOQ
		trans-Nerolidol	0.118
		Nerolidol	0.150
		Guaiol	0.0480
		Caryophyllene oxide	ND
		α-Bisabolol	0.268
		<b>Total Terpene %</b>	4.16

Microbiological Profile	
All Results	Pass

Mycotoxin Screening	
All Results	Pass

Residual Solvents	
All Results	Pass

Heavy Metals Screening	
All Results	Pass

Pesticide Screening	
All Results	Pass

Filth and Foreign Materials Screening	
All Results	Pass

**NOTES:** mg/L = ppm, µg/L = ppb. "<" denotes "less than". ND is non-detectable quantity.  
 This report of analysis may not be modified in any way, or reproduced except in full, without written approval from Transparent Testing. Results as reported relate only to samples as submitted, unless specifically noted otherwise. Statements of conformity are reported as simple acceptance and do not apply any measurement of uncertainty values. Measurement uncertainty is available upon request. **The Limit of Detection (LOD)** is the lowest limit at which the method can detect an analyte's presence as greater than zero. **The Limit of Quantitation (LOQ)** is the lowest limit at which the method is accurately able to quantify an analyte. The Threshold is the limit at which the Oklahoma Medical Marijuana Authority (OMMA) deems medical marijuana and marijuana-infused products as safe for use.



**PJLA**  
 Testing  
 Accreditation #115041  
 ISO/IEC 17025:2017 Accredited

# Potency

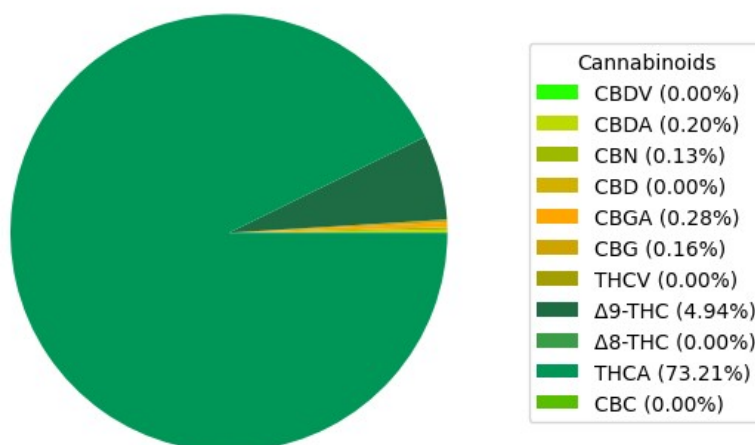
Date Completed: 01/17/2025

Instrument: Agilent 1100 (HPLC) - Agilent (DAD)

Lab Tech: Wes Owen

Analyte	Weight (%)	Result (mg/g)	LOQ (mg/g)
CBDV	ND	ND	0.650
CBDA	0.198	1.98	0.650
CBN	0.127	1.27	0.650
CBD	ND	ND	0.650
CBGA	0.282	2.82	0.650
CBG	0.163	1.63	0.650
THCV	ND	ND	0.650
$\Delta$ 9-THC	4.94	49.4	0.650
$\Delta$ 8-THC	ND	ND	0.650
THCA	73.2	732	0.650
CBC	ND	ND	0.650
<b>Total CBD</b>	< LOQ	1.74	
<b>Total THC</b>	69.1	691	

Cannabinoid Distribution (%)



**NOTES:** mg/L = ppm,  $\mu$ g/L = ppb. "<" denotes "less than". ND is non-detectable quantity.  
 This report of analysis may not be modified in any way, or reproduced except in full, without written approval from Transparent Testing. Results as reported relate only to samples as submitted, unless specifically noted otherwise. Statements of conformity are reported as simple acceptance and do not apply any measurement of uncertainty values. Measurement uncertainty is available upon request. **The Limit of Detection (LOD)** is the lowest limit at which the method can detect an analyte's presence as greater than zero. **The Limit of Quantitation (LOQ)** is the lowest limit at which the method is accurately able to quantify an analyte. The Threshold is the limit at which the Oklahoma Medical Marijuana Authority (OMMA) deems medical marijuana and marijuana-infused products as safe for use.



**PJLA**  
 Testing  
 Accreditation #115041  
 ISO/IEC 17025:2017 Accredited

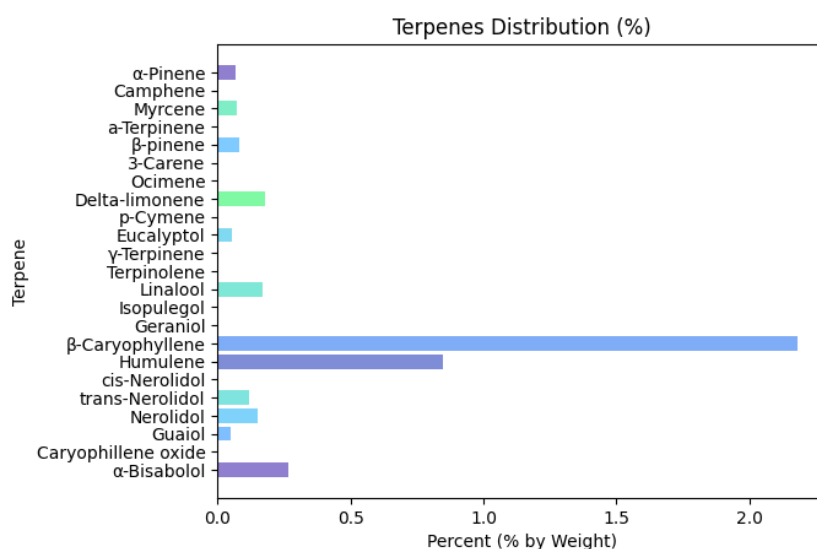
# Terpenoid

Date Completed: 01/17/2025

Instrument: HP 6890 (GC) - Agilent (FID)

Lab Tech: Wes Owen

Analyte	Result (mg/g)	Result (%)	LOD ( $\mu\text{g/mL}$ )	LOQ ( $\mu\text{g/mL}$ )
$\alpha$ -Pinene	0.670	0.0670	6.25	12.5
Camphene	< LOQ	< LOQ	6.25	12.5
Myrcene	0.714	0.0714	6.25	12.5
a-Terpinene	< LOQ	< LOQ	6.25	12.5
$\beta$ -pinene	0.828	0.0828	6.25	12.5
3-Carene	< LOQ	< LOQ	6.25	12.5
Ocimene	< LOQ	< LOQ	6.25	12.5
Delta-limonene	1.81	0.181	6.25	12.5
p-Cymene	< LOQ	< LOQ	6.25	12.5
Eucalyptol	0.557	0.0557	6.25	12.5
$\gamma$ -Terpinene	< LOQ	< LOQ	6.25	12.5
Terpinolene	< LOQ	< LOQ	6.25	12.5
Linalool	1.70	0.170	6.25	12.5
Isopulegol	< LOQ	< LOQ	6.25	12.5
Geraniol	< LOQ	< LOQ	6.25	12.5
$\beta$ -Caryophyllene	21.8	2.18	6.25	12.5
Humulene	8.46	0.846	6.25	12.5
cis-Nerolidol	< LOQ	< LOQ	6.25	12.5
trans-Nerolidol	1.18	0.118	6.25	12.5
Nerolidol	1.50	0.150	6.25	12.5
Guaiol	0.480	0.0480	6.25	12.5
Caryophyllene oxide	ND	ND	6.25	12.5
$\alpha$ -Bisabolol	2.68	0.268	6.25	12.5
<b>Total Terpenes:</b>	<b>41.6</b>	<b>4.16</b>		



**NOTES:** mg/L = ppm,  $\mu\text{g/L}$  = ppb. "<" denotes "less than". ND is non-detectable quantity. This report of analysis may not be modified in any way, or reproduced except in full, without written approval from Transparent Testing. Results as reported relate only to samples as submitted, unless specifically noted otherwise. Statements of conformity are reported as simple acceptance and do not apply any measurement of uncertainty values. Measurement uncertainty is available upon request. **The Limit of Detection (LOD)** is the lowest limit at which the method can detect an analyte's presence as greater than zero. **The Limit of Quantitation (LOQ)** is the lowest limit at which the method is accurately able to quantify an analyte. The Threshold is the limit at which the Oklahoma Medical Marijuana Authority (OMMA) deems medical marijuana and marijuana-infused products as safe for use.



**PJLA**  
Testing  
Accreditation #115041  
ISO/IEC 17025:2017 Accredited

# Heavy Metals

**PASS****Date Completed:** 01/13/2025**Instrument:** Perkin Elmer Elan DRC II (ICP-MS)**Lab Tech:** Olivia Webb

Analyte	Result (ppm)	Threshold (ppm)	LOD (ppm)	LOQ (ppm)	Pass/Fail
Cadmium	ND	0.200	0.0500	0.100	Pass
Lead	< LOQ	0.500	0.125	0.250	Pass
Arsenic	ND	0.200	0.0500	0.100	Pass
Mercury	< LOQ	0.100	0.0250	0.0500	Pass

# Microbial Analysis

**PASS****Date Completed:** 01/17/2025**Instrument:** Agilent AriaMx (qPCR)**Lab Tech:** Lab Technician

Analyte	Result (CFU/g)	Threshold (CFU/g)	Pass/Fail
Escherichia Coli (E. Coli)	ND *	1.00	Pass
Yeast/Mold	ND *	10,000	Pass
Salmonella spp	ND *	1.00	Pass
Aspergillus Niger	ND *	1.00	Pass
Aspergillus Fumigatus	ND *	1.00	Pass
Aspergillus Terreus	ND *	1.00	Pass
Aspergillus Flavus	ND *	1.00	Pass

\*This test was performed by an outside third-party analytical laboratory. All third party laboratories used by Transparent Testing, LLC have ISO 17025 accreditation and OMMA laboratory license #LAAA-NYWH-5XOE.

# Pesticide Profile

**PASS****Date Completed:** 01/24/2025**Instrument:** Agilent 1200 (HPLC) - Agilent 6460 (QQQ)**Lab Tech:** Wes Owen

Analyte	Result (ppm)	LOQ (ppm)	Threshold (ppm)	Pass/Fail
Abamectin	ND	0.250	0.500	Pass
Azoxystrobin	ND	0.100	0.200	Pass
Bifenazate	ND	0.100	0.200	Pass
Etoxazole	ND	0.100	0.200	Pass
Imazalil	ND	0.100	0.200	Pass
Imidacloprid	ND	0.200	0.400	Pass
Malathion	ND	0.100	0.200	Pass
Myclobutanil	ND	0.100	0.200	Pass
Permethrin	ND	0.100	0.200	Pass
Spinosad	ND	0.100	0.200	Pass
Spiromesifen	ND	0.100	0.200	Pass
Spirotetramat	ND	0.100	0.200	Pass
Tebuconazole	ND	0.200	0.400	Pass

**NOTES:** mg/L = ppm, µg/L = ppb. "<" denotes "less than". ND is non-detectable quantity.

This report of analysis may not be modified in any way, or reproduced except in full, without written approval from Transparent Testing. Results as reported relate only to samples as submitted, unless specifically noted otherwise. Statements of conformity are reported as simple acceptance and do not apply any measurement of uncertainty values. Measurement uncertainty is available upon request. **The Limit of Detection (LOD)** is the lowest limit at which the method can detect an analyte's presence as greater than zero. **The Limit of Quantitation (LOQ)** is the lowest limit at which the method is accurately able to quantify an analyte. The Threshold is the limit at which the Oklahoma Medical Marijuana Authority (OMMA) deems medical marijuana and marijuana-infused products as safe for use.



**PJLA**  
Testing  
Accreditation #115041  
ISO/IEC 17025:2017 Accredited

# Foreign Materials

**PASS**

Date Completed: 01/09/2025

Instrument: NA

Lab Tech: Lab Technician

Analyte	Pass/Fail	Comments
Foreign Materials	Pass	N/A

# Mycotoxins

**PASS**

Date Completed: 01/24/2025

Instrument: Agilent 1200 (HPLC) - Agilent 6460 (QQQ)

Lab Tech: Wes Owen

Analyte	Result (ppb)	Threshold (ppb)	Pass/Fail
Aflatoxin B1	ND	N/A	
Aflatoxin B2	ND	N/A	
Aflatoxin G1	ND	N/A	
Aflatoxin G2	ND	N/A	
Ochratoxin A	ND	20.0	Pass
Total Aflatoxins	ND	20.0	Pass

# Residual Solvents

**PASS**

Date Completed: 01/17/2025

Instrument: Agilent 6890N (Headspace GC) - Agilent 5973 (MS)

Lab Tech: Wes Owen

Analyte	Result (ppm)	LOQ (ppm)	Threshold (ppm)	Pass/Fail
Acetone	30.3	20.0	1000	Pass
Benzene	ND	1.00	2.00	Pass
Butane	27.3	20.0	1000	Pass
Heptane	ND	20.0	1000	Pass
n-Hexane	ND	20.0	60.0	Pass
Isopropyl alcohol	ND	20.0	1000	Pass
n-Pentane	ND	20.0	1000	Pass
Propane	ND	20.0	1000	Pass
Toluene	ND	20.0	180	Pass
Total xylenes (m, p, o-xylenes)	ND	20.0	430	Pass
Methanol	ND	20.0	600	Pass
Ethanol	ND	20.0	5000	Pass
Ethyl Acetate	ND	20.0	1000	Pass



**Approved By:** Lab Director  
Transparent Testing, LLC  
01/24/2025

**NOTES:** mg/L = ppm, µg/L = ppb. "<" denotes "less than". ND is non-detectable quantity.  
This report of analysis may not be modified in any way, or reproduced except in full, without written approval from Transparent Testing. Results as reported relate only to samples as submitted, unless specifically noted otherwise. Statements of conformity are reported as simple acceptance and do not apply any measurement of uncertainty values. Measurement uncertainty is available upon request. **The Limit of Detection (LOD)** is the lowest limit at which the method can detect an analyte's presence as greater than zero. **The Limit of Quantitation (LOQ)** is the lowest limit at which the method is accurately able to quantify an analyte. The Threshold is the limit at which the Oklahoma Medical Marijuana Authority (OMMA) deems medical marijuana and marijuana-infused products as safe for use.



**PJLA**  
Testing  
Accreditation #115041  
ISO/IEC 17025:2017 Accredited